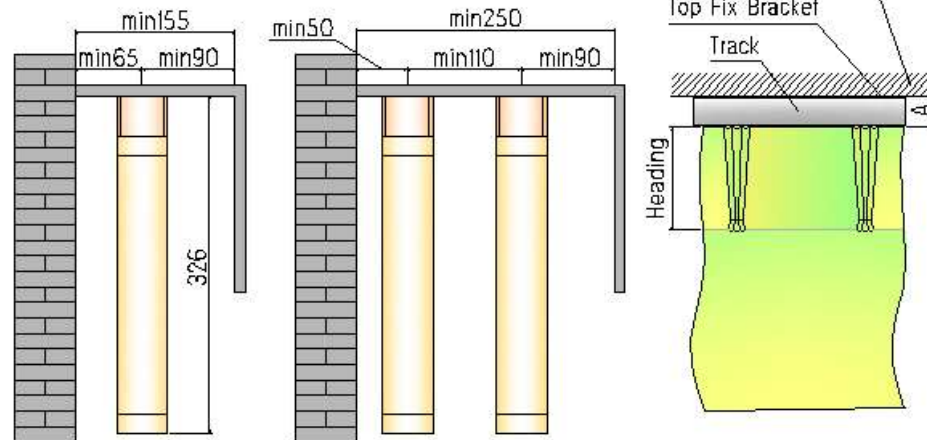


- ✦ Powerful quiet AC motor.
- ✦ Matching Trietex tracking system.
- ✦ One step limits setting.
- ✦ Soft start/Motor running can be started when curtain is drawn by hand.
- ✦ Curtain can be hand-traversed when the power is off.
- ✦ Slave motor can be operated.
- ✦ Built-in radio receiver, dry contact and RS485 interface.
- ✦ Integrates on same remote control with Motolux roller blind, Roman and Cellular blind motor systems
- ✦ Available as pre-fabricated motorised tracks in certain markets

MOTOR VIEW



FITTING INFORMATION



Dimension Unit: mm Please keep the minimum sizes as requested.
 The fabric should be lace or voile for the inside one of double tracks.
 A = 130mm – Heading, Heading = 90 or 100mm, Curtain Hook No.: 71

CONFIGURATION



LOADING CHART

Headrail Status	4m	6m	8m	10m	12m
Side or Centre Opening	70	55	40	25	10
Master & Slave Motor	80		70		
Gently Curved Headrail	60	45	30	15	NA
Master & Slave Motor	70		60		
Radius 350mm Side or Centre Opening	55	40	25	10	NA
Radius 350mm Master & Slave Motor	65		55		
Radius 350mm Side or Centre Opening	30	15	NA		
Radius 350mm Master & Slave Motor	40		30		

MOTOR SPECIFICATION

Model	MC02-70-240/50
Voltage	240V/50Hz
Current	300mA
Power	70W
Speed	110rpm
Operating Cycle	4min continuous
Radio Frequency	433.92
Operating Distance	30 meters indoor
Max Track Length	12 meters
Tandem Motor Option	Yes
Motor Weight	1.4kg
Motor Dimensions	L50XW60X295mm

Ordering information

Australian / New Zealand
 +61 (03) 9876 0400 sales@motolux.com.au